

**BALDOR® • RELIANCE** 

**Product Information Packet**

**FDEM4314T**

**60HP,1780RPM,3PH,60HZ,364T,1462M,TEFC,F1**

Part Detail							
Revision:	D	Status:	PRD/A	Change #:		Proprietary:	No
Type:	AC	Elec. Spec:	A36WG4075	CD Diagram:	CD0180	Mfg Plant:	
Mech. Spec:		Layout:	617428-066	Poles:	04	Created Date:	05-16-2019
Base:		Eff. Date:	04-24-2020	Leads:	3#4,6#6		Y

Specs			
Catalog Number:	FDEM4314T	Enclosure Modification:	Severe Duty Features
Enclosure:	TEFC	Feedback Device:	NO FEEDBACK
Frame:	364T	Heater Indicator:	No Heater
Frame Material:	Iron	Insulation Class:	F
Output @ Frequency:	60.000 HP @ 60 HZ	Inverter Code:	Inverter Ready
Synchronous Speed @ Frequency:	1800 RPM @ 60 HZ	IP Rating:	NONE
Voltage @ Frequency:	230.0 V @ 60 HZ	KVA Code:	G
	460.0 V @ 60 HZ	Lifting Lugs:	No Lifting Lugs
XP Class and Group:	None	Motor Lead Quantity/Wire Size:	3 @ 4 AWG
XP Division:	Not Applicable	Motor Type:	A3658M
Agency Approvals:	CCSA US	Mounting Arrangement:	F1
	CSA EEV	Power Factor:	84
Auxillary Box:	No Auxillary Box	Pulley End Bearing Type:	Ball
Base Indicator:	Rigid	Pulley Face Code:	Standard
Bearing Grease Type:	Polyrex EM (-20F +300F)	Shaft Ground Indicator:	No Shaft Grounding
Current @ Voltage:	140.000 A @ 230.0 V	Shaft Rotation:	Reversible
	152.000 A @ 208.0 V	Shaft Slinger Indicator:	Shaft Slinger
	70.000 A @ 460.0 V	Speed Code:	Single Speed

<b>Design Code:</b>	B	<b>Motor Standards:</b>	NEMA
<b>Drip Cover:</b>	No Drip Cover	<b>Starting Method:</b>	Direct on line
<b>Duty Rating:</b>	CONT	<b>Thermal Device - Bearing:</b>	None
		<b>Thermal Device - Winding:</b>	None

Nameplate NP3159L									
SPEC NO.	A36-5276-4075	CAT.NO.	FDEM4314T	FRAME	364T				
HP	60	VOLTS	230/460	PHASE	3	DESIGN	B	TYPE	P
RPM	1780	AMPS	140/70	HZ	60	AMB	40	SF	1.15
DRIVE END BEARING	65BC03JGG30A	DUTY	CONT	INSUL.CLASS	F				
OPP D.E. BEARING	65BC03JGG30A	ENCL	TEFC	CODE	G				
SER.NO.		POWER FACTOR	84	NEMA-NOM-EFFICIENCY	95				
				MAX CORR KVAR	15	GUARANTEED EFFICIENCY	94.1		
	SUIT FOR 208 V @ 152 AMPS			NEMA NOM/CSA QUOTED EFF					
	50HZ 50HP 190/380V 138/69A 1.0SF			MOTOR WEIGHT	910				

Parts List		
Part Number	Description	Quantity
SA369873	SA A36-5276-4075	1.000 EA
RA359481	RA A36-5276-4075	1.000 EA
000613006PU	N/P (RELEASE QTY 10,000) UL CSA LABEL	1.000 EA
000692000VD	LABEL WARNING	1.000 EA
NP3159L	SUPER-E FARM DUTY, SS, CC, CSA-C US,	1.000 EA
421948032	LABEL, MYLAR	1.000 EA
032018008AK	HHCS 1/4-20X1 PLATED	4.000 EA
032018012DK	HHCS 1/2-13X1-1/2 PLTD.	4.000 EA
032018024CK	HHCS 3/8-16X3 PLTD.	3.000 EA
034180012DA	KEY 1X4X1/4X1-1/2 L	1.000 EA
034690001AB	1/8" NPT SQHDPLG	1.000 EA
702676001C	FAN 360	1.000 EA
078559001A	+FANCV - 360	1.000 EA
085922073B	BRKT 360 085922072WCC KB	1.000 EA
410700004F	WSHR	1.000 EA
415072001B	CLAMP	1.000 EA
032018012DK	HHCS 1/2-13X1-1/2 PLTD.	4.000 EA
032018024CK	HHCS 3/8-16X3 PLTD.	3.000 EA
034690001AB	1/8" NPT SQHDPLG	1.000 EA
085922093AE	BRKT 360 085922072WCC	1.000 EA
032018005AK	HHCS 1/4-20X5/8 PLATED	4.000 EA
032018008CK	HHCS 3/8-16X1L PLATED	4.000 EA
033512004LB	HHTTS 1/4-20X1/2 PLTD.	1.000 EA
043292000AJ	GASK 320-400	1.000 EA

<b>Parts List (continued)</b>		
<b>Part Number</b>	<b>Description</b>	<b>Quantity</b>
077176000L	C/BOX, 360-400	1.000 EA
077176001A	CBOXC, PAINTED 360-400	1.000 EA
402731001A	GASK 360-440	1.000 EA
406099000A	PLUG - FAN COVER 320-440	1.000 EA
415000103D	T/LUG #4AWG-1/0AWG W/HOLE FOR .250 BOLT	1.000 EA
MG1025C02	WILKOFASST SG, 787.105, TAN	0.250 GA
033775004EA	DRSCR #6-1/4 304 S.S.	6.000 EA
034180034HA	KEY 5/8X5/8X4-1/4 L	1.000 EA
415028001Y	SEAL - 360	1.000 EA
423709011C	WASHER	3.000 EA
415045002E	SLGR	1.000 EA
000692000CY	N/P	1.000 EA
034690001AB	1/8" NPT SQHDPLG	1.000 EA
034690001AB	1/8" NPT SQHDPLG	1.000 EA
034690002AB	PPLG 1/4" PLTD.	1.000 EA
034690002AB	PPLG 1/4" PLTD.	1.000 EA
032509020C	CARRIAGE BOLT - 360	3.000 EA
14PA1000	PACKAGING 314 GROUP COMBINED PRINT	1.000 EA

**AC Induction Motor Performance Data**

Record # 72794 - Typical performance - not guaranteed values

<b>Winding:</b> A36WG4075-R001	<b>Type:</b> A3658M	<b>Enclosure:</b> TEFC
--------------------------------	---------------------	------------------------

Nameplate Data				460 V, 60 Hz: High Voltage Connection	
Rated Output (HP)	60			Full Load Torque	176.4 LB-FT
Volts	230/460			Start Configuration	direct on line
Full Load Amps	140/70			Breakdown Torque	422 LB-FT
R.P.M.	1780			Pull-up Torque	276 LB-FT
Hz	60	Phase	3	Locked-rotor Torque	352 LB-FT
NEMA Design Code	B	KVA Code	G	Starting Current	462 A
Service Factor (S.F.)	1.15			No-load Current	24.8 A
NEMA Nom. Eff.	95	Power Factor	84	Line-line Res. @ 25°C	0.10816 Ω
Rating - Duty	40C AMB-CONT			Temp. Rise @ Rated Load	56°C
S.F. Amps				Temp. Rise @ S.F. Load	70°C
				Locked-rotor Power Factor	32.3

**Load Characteristics 460 V, 60 Hz, 60 HP**

% of Rated Load	25	50	75	100	125	150	S.F.
Power Factor	51	73	81	84	86	85	85
Efficiency	92.6	95.1	95.4	95.2	94.6	93.8	94.8
Speed	1796.4	1792.4	1788	1783.7	1778.3	1772.3	1780
Line amperes	29.7	40.7	54.4	69.7	86.6	105	79.8

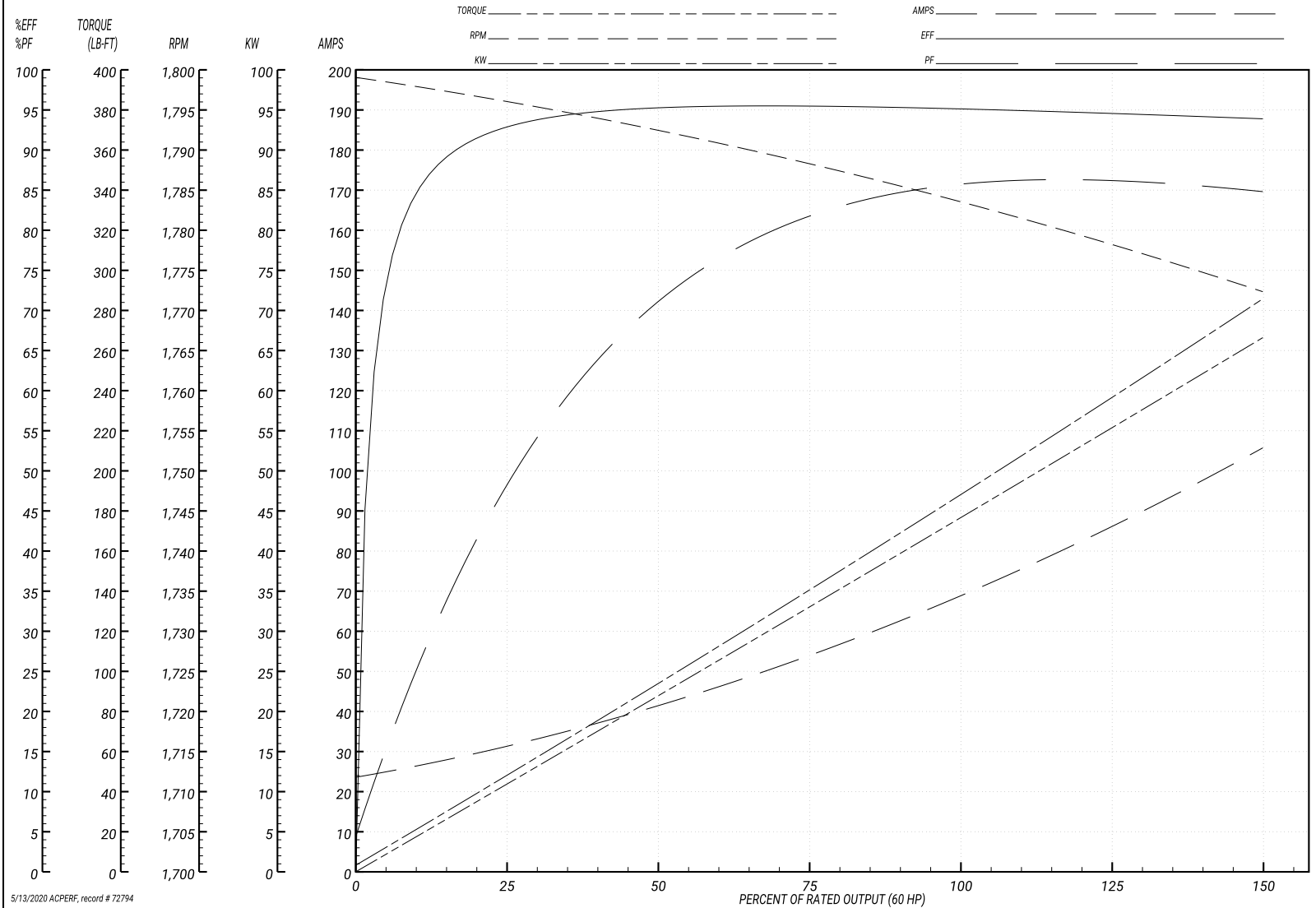
Performance Graph at 0V, 0Hz, 0.0null Typical performance - Not guaranteed values

ABB Motors and Mechanical Inc.

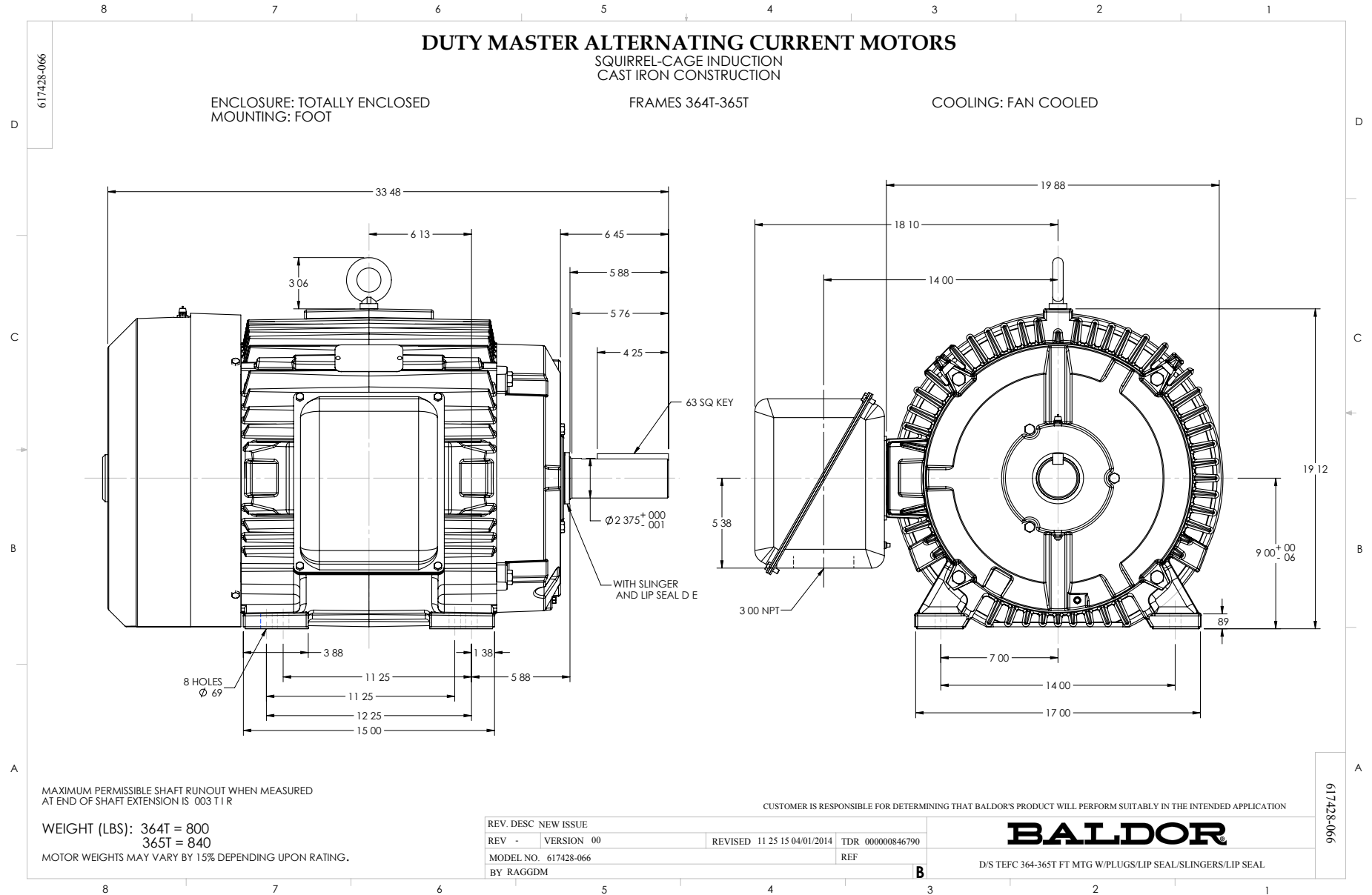
WINDING # A36WG4075

Typical performance - not guaranteed values.

60 HP 3 PH 60 HZ 1780 RPM 460 V A3658M  
 TORQUES(LB-FT): PO=422 PU=276 LR=352 LRA=462



5/13/2020 ACPERF, record # 72794



CD0180



LOW VOLTAGE  
(2D)



HIGH VOLTAGE  
(1D)



NOTES:

1. INTERCHANGE ANY TWO LINE LEADS TO REVERSE ROTATION.
2. OPTIONAL THERMOSTATS ARE PROVIDED WHEN SPECIFIED.
3. ACTUAL NUMBER OF INTERNAL PARALLEL CIRCUITS MAY BE A MULTIPLE OF THOSE SHOWN ABOVE.
4. LEAD COLORS ARE OPTIONAL. LEADS MUST ALWAYS BE NUMBERED AS SHOWN.

CD0180

REV. DESC: ADD CLASS CONN00000007		
REV. LTR: D	VERSION: 01	TDR: 000001099922
FILE: \AAA\00005\148	REVISED: 10:25:29 02/19/2019	BY: ENBRIRO
MTL: -	© □	

**BALDOR - RELIANCE®**

3PH, DV, 9 LEADS, DELTA CONNECTION

SH 1 of 1

Marketing maintained PDF of MN408:

[MN408?ManNumber=MN408](#)

Marketing maintained PDF of MN416:

[MN416?ManNumber=MN416](#)